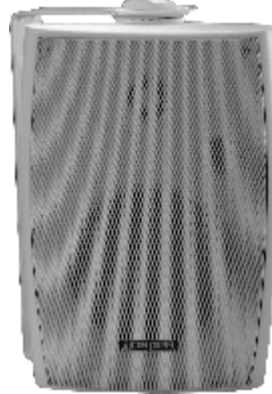




Public Address System

Wall Mount Speaker System DSP6061



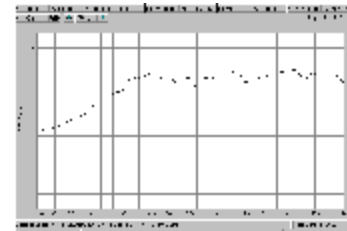
OWNER'S MANUAL

Thank you for purchasing PA speaker system of DSPPA series. All of DSPPA series products have been tested strictly before shipping. DSPPA series PA speaker system is widely used in hotel, trade building, supermarket, school, entertainment, etc. It's the most ideal choice of you! In order to facilitate installing, modulating and running please read this manual carefully before setup.

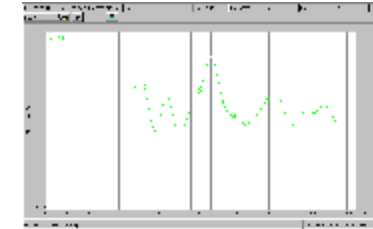
FEATURES:

- I Voltage 70/100V,Max. Sound Pressure Level $100 \pm 2\text{dB}$, Effective Freq. Range 100Hz-20kHz;
- I Weight 2.8kg, equipped with hanging holes for mounting convenient;
- I Made of high quality engineering plastic, long-term durability, never out of shape and fade;
- I Driver surround excellent damping, provided with high sensitivity ($90 \pm 2\text{dB}$), long life, sounds clear and sonorousness.

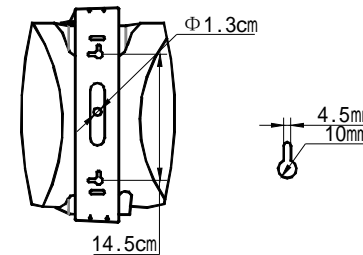
FREQ. RESPONSE



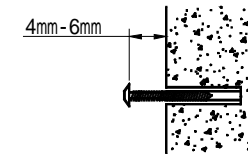
DISTORTION



HANGING HOLE



NAIL FOR MOUNTING



INSTALLATION

1. Fit two $\text{O}4\text{mm}$ nails on wall where it is needed to install a speaker system as shown above.
 2. Connect audio broadcasting wire to the terminals according to the table below.
- | Terminals | Power | Line Voltage |
|--------------|-------|--------------|
| | 70V | 100V |
| Red--- Black | 5W | 10W |
3. Position the speaker, then adjust the direction of it and examine whether it is steady.

DSPPA ACOUSTIC TECHNOLOGY CO., LTD.